

Contract No. HK/2009/01

Contract Title : Wan Chai Development Phase II - Central - Wan Chai Bypass at HKCEC

Working Programme for Marine Works (Dredging and Backfilling)

ACTIVITY	START	FINISH	2010												2011												2012												2013																																			
			Feb	Mar	Apr	May	Jun	Jul	Aug	Sep	Oct	Nov	Dec	Jan	Feb	Mar	Apr	May	Jun	Jul	Aug	Sep	Oct	Nov	Dec	Jan	Feb	Mar	Apr	May	Jun	Jul	Aug	Sep	Oct	Nov	Dec	Jan	Feb	Mar	Apr	May	Jun	Jul	Aug	Sep	Oct	Nov	Dec																									
Submissions before Works Commencement																																																																										
Submit silt curtain deployment plan	31/3/10	31/3/10	◆																																																																							
Submit silt screen deployment plan	31/3/10	31/3/10	◆																																																																							
Submit measures to mitigate noise impact	31/3/10	31/3/10	◆																																																																							
Cross Harbour Watermains from WCN to TST (DP6)																																																																										
Trench dredging for marine watermains installation	29/4/10	28/10/10	■																																																																							
Backfilling for watermain	28/1/11	14/12/11													■																																																											
Reclamation Works at HKCEC Water Channel (DP3)																																																																										
Dredging at HKCEC Water Channel (Western Part)	1/6/10	1/8/10	■																																																																							
Backfilling to +3.5mPD (Western Part)	17/8/10	6/2/11													■																																																											
Dredging at HKCEC Water Channel (Middle Part)	2/8/10	6/1/11													■																																																											
Backfilling to +3.5mPD (Middle Part)	21/2/11	1/6/11													■																																																											
Dredging at HKCEC Water Channel (Eastern Part)	1/12/12	31/12/12																																					■																																			
Backfilling to +3.5mPD (Eastern Part)	16/1/13	30/4/13																																																	■																							

**Dredging & Reclamation Works Programme Summary
(based on Initial Works Programme Rev. 0)**

ID	Task Name	Duration	Start	Timeline																
				2010	2011	2012	2013	2014	2015											
				Q4	Q1	Q2	Q3	Q4	Q1	Q2	Q3	Q4	Q1	Q2	Q3	Q4	Q1	Q2	Q3	Q4
1	HK/2009/02-Marine & Reclamation Works	2008 d	Thu 28/1/10	[Summary bar from Q4 2009 to Q4 2015]																
2	Contract Commencement	0 d	Thu 28/1/10	[Milestone diamond at start of timeline]																
3	General	1879 d	Mon 22/2/10	[Summary bar from Q1 2010 to Q4 2015]																
4	Submission & obtain approval for marine GI	21 d	Mon 22/2/10	[Task bar in Q1 2010]																
5	Stage 1 Marine GI for reclamation	30 d	Mon 15/3/10	[Task bar in Q1 2010]																
6	Engineer's Design review for Dredging of WCR1, WCR2 & WCR4	30 d	Mon 22/3/10	[Task bar in Q1 2010]																
7	Relocation of New Star Ferry Pier	0 d	Tue 18/3/14	[Milestone diamond in Q3 2014]																
8	Demolition of Existing Star Ferry Pier	100 d	Tue 18/3/14	[Task bar in Q3 2014]																
9	Stage 2 Marine GI for Reclamation	14 d	Tue 18/3/14	[Task bar in Q3 2014]																
10	Engineer's Design review for Dredging of WCR3	21 d	Tue 25/3/14	[Task bar in Q3 2014]																
11	Complete Diversion of Hung Hing Road Traffic Back to Original	20 d	Fri 6/2/15	[Task bar in Q2 2015]																
12	Excavate & remove top of d-wall for permanent seawall construction	50 d	Wed 25/2/15	[Task bar in Q2 2015]																
13	Submarine Outfall	500 d	Tue 21/9/10	[Summary bar from Q3 2010 to Q4 2011]																
14	Dredging, Laying and Backfilling of Submarine Outfall Pipe at Sea	500 d	Tue 21/9/10	[Task bar from Q3 2010 to Q4 2011]																
15	Phase 1 - WCR1	158 d	Wed 21/4/10	[Summary bar from Q1 2010 to Q4 2010]																
16	Mobilization of plants	1 d	Wed 21/4/10	[Task bar in Q1 2010]																
17	Seabed dredging	63 d	Wed 21/4/10	[Task bar in Q1 2010]																
18	Bedding Filling and Permanent seawall (precast cassion)	60 d	Tue 22/6/10	[Task bar in Q2 2010]																
19	Bulk reclamation	37 d	Fri 20/8/10	[Task bar in Q2 2010]																
20	Phase 2 - WCR2	149 d	Thu 1/3/12	[Summary bar from Q3 2011 to Q4 2012]																
21	Mobilization of plants	1 d	Thu 1/3/12	[Task bar in Q3 2011]																
22	Temp seawall and Seabed dredging	77 d	Thu 1/3/12	[Task bar in Q3 2011]																
23	Bulk reclamation	73 d	Wed 16/5/12	[Task bar in Q4 2011]																
24	Phase 3 - TWCR4 & WCR4	98 d	Sat 28/4/12	[Summary bar from Q4 2011 to Q4 2012]																
25	Mobilization of plants	1 d	Sat 28/4/12	[Task bar in Q4 2011]																
26	Temp Seawall and Seabed dredging	75 d	Sat 28/4/12	[Task bar in Q4 2011]																
27	Bulk & temp reclamation	24 d	Wed 11/7/12	[Task bar in Q3 2012]																
28	Phase 4 - WCR3	294 d	Tue 18/3/14	[Summary bar from Q3 2012 to Q4 2014]																
29	Mobilization of plants	1 d	Tue 18/3/14	[Task bar in Q3 2012]																
30	Seabed dredging for Permanent Seawall	112 d	Tue 18/3/14	[Task bar in Q3 2012]																
31	Backfill and permanent seawall (precast cassion)	108 d	Tue 8/7/14	[Task bar in Q4 2012]																
32	Bulk reclamation	74 d	Fri 24/10/14	[Task bar in Q4 2012]																
33	Phase 5 - Construct Permanent Seawall Blocks along curved coastline & Remove TWCR4	105 d	Wed 15/4/15	[Summary bar from Q4 2012 to Q4 2014]																
34	Mobilization of plants	1 d	Wed 15/4/15	[Task bar in Q4 2012]																
35	Dredging and Filling for permanent seawall construction	50 d	Wed 15/4/15	[Task bar in Q4 2012]																
36	Construction of Permanent Seawall Blocks for curved coastline	56 d	Wed 3/6/15	[Task bar in Q1 2013]																
37	Remove temp seawall and reinstate the location of TWCR4	30 d	Mon 29/6/15	[Task bar in Q1 2013]																

Project: Reclamation Works Programme
Date: Tue 9/3/10

Task		Summary		Rolled Up Progress		Project Summary	
Progress		Rolled Up Task		Split		Group By Summary	
Milestone		Rolled Up Milestone		External Tasks		Deadline	

Activity ID	Cal ID	Activity Description	Orig Dur	Early Start	Early Finish	Year														
						2010	2011	2012	2013	2014	2015	2016	2017							
TCBR1E (TS1 Area)																				
105	1	TCBR1E(TS1)-dredging+rockfill(pre. for seawall)	86	03DEC10*	26FEB11															
110	1	TCBR1E (TS1)-temporary reclamation	69	28JAN11*	06APR11															
155	1	TCBR1E (TS1)- removal of temporary reclamation	27	30JAN12*	25FEB12															
TCBR4																				
100	1	Maintenance dredging for navigation safety for	7	20NOV10*	26NOV10															
TCBR2 + TCBR3 (TS2 Area)																				
115	1	TCBR2&TCBR3(TS2)- Maintenance dredging for	5	15NOV10*	19NOV10															
117	1	TCBR2&TCBR3(TS2)-dredge+rockfill seabed	64	16DEC11*	17FEB12															
120	1	TCBR2&TCBR3(TS2) --temporary reclamation	115	26FEB12*	19JUN12															
160	1	TCBR2&TCBR3(TS2-removal temporary reclamation	57	18AUG13*	13OCT13															
TCBR1W (TS4 Area)																				
125	1	TCBR1W(TS4)-dredging+rockfill(pre. for seawall)	40	19DEC10*	27JAN11															
130	1	TCBR1W(TS4) --temporary reclamation	68	28JAN11	05APR11															
165	1	TCBR1W(TS4)--removal temporary reclamation	26	27OCT13*	21NOV13															
TPCWAE																				
135	1	TPCWAE-dredging+rockfill(pre. for seawall)	55	03DEC10*	26JAN11															
140	1	TPCWAE --temporary reclamation	77	27JAN11	13APR11															
170	1	TPCWAE--removal temporary reclamation	28	28SEP13*	25OCT13															
TPCWAW																				
145	1	TPCWAW-dredging+rockfill(pre. for seawall)	47	28OCT13*	13DEC13															
150	1	TPCWAW --temporary reclamation	83	14DEC13	06MAR14															
175	1	TPCWAW--removal temporary reclamation	50	02JUL15*	20AUG15															

 Early Bar
 Progress Bar
 Critical Activity

EP02 CHINA STATE CONSTRUCTION ENGG LTD Sheet 1 of 1
 CONTRACT NO. HY/2009/15: CENTRAL WAN CHAI BYPASS- TUNNEL (CBTS SECTION)

Prepared based on IWP Rev. 0
 Date Prepared: 28 Oct 2010

Activity ID	Activity Name	Rem Dur	Start	Finish	2013												2014					
					December					January				February			March					
					25	02	09	16	23	30	06	13	20	27	03	10	17	24	03	10	17	
0240-1128	Noise Barrier Structural Design - No Adverse Comment	0	26-Nov-13 A	14-Dec-13 A	Noise Barrier Structural Design - No Adverse Comment																	
0240-1131	Noise Barrier - Procurement/Sub-contractor	6	01-Nov-13 A	25-Dec-13	Noise Barrier - Procurement/Sub-contractor																	
0240-1132	Noise Barrier Structural - Shop Drawings	90	26-Dec-13	25-Mar-14																		
0240-1133	Noise Barrier Structural - Fabrication/Delivery	90	24-Feb-14	24-May-14																		
0240-1134	Noise Barrier Panel - Submission	36	26-Dec-13	30-Jan-14	Noise Barrier Panel - Submission																	
0240-1136	Noise Barrier Panel - Design ER Review/Resubmission	28	31-Jan-14	27-Feb-14	Noise Barrier Panel - Design																	
0240-1137	Noise Barrier Panel - Design No Adverse Comment	28	28-Feb-14	27-Mar-14																		
0240-1138	Noise Barrier Panel - Fabrication Delivery	90	28-Feb-14	28-May-14																		
0240-1141	Noise Barrier Green Wall - Design Submission	60	25-Jan-14	25-Mar-14																		
0240-1050	Temp Bridge "TB" & "TC" Design - Prep & Submit	60	17-Feb-14*	17-Apr-14																		
0240-1430	Temp. Tie-in Bridge F3A to Existing E/B Bridge - Design Submission	30	17-Feb-14*	18-Mar-14	Te																	
0240-1440	Temp. Tie-in Bridge F3A to Existing E/B Bridge - Comment/Resubmission	18	19-Mar-14	05-Apr-14																		
02.5 - Bridge Segment/Beam Off-site Precasting																						
0250-1700.51	Bridge Precast Beam Casting Bridge E Beam E2E1-B	0	26-Oct-13 A	30-Nov-13 A	Bridge Precast Beam Casting Bridge E Beam E2E1-B																	
0250-1700.61	Bridge Precast Beam Casting Bridge E Beam E2E1-C	0	22-Nov-13 A	17-Dec-13 A	Bridge Precast Beam Casting Bridge E Beam E2E1-C																	
0250-1650.20	Bridge D1 Pier D02 Precasting Segment (1-17) - Mould S1	42	01-Jan-14	12-Feb-14	Bridge D1 Pier D02 Precasting Segment (1-17) - M																	
0250-1650.18	Bridge D2 Pier D04 Precasting Segment (1-8) - Mould S2	0	22-Nov-13 A	08-Dec-13 A	Bridge D2 Pier D04 Precasting Segment (1-8) - Mould S2																	
0250-1600.15	Bridge D1 Pier D03 Precasting Segment (1-17) - Mould S2	13	15-Nov-13 A	01-Jan-14	Bridge D1 Pier D03 Precasting Segment (1-17) - Mould S2																	
0250-1650.19	Bridge D1 Pier D04 Precasting Segment (1-8) - Mould S2	17	07-Dec-13 A	05-Jan-14	Bridge D1 Pier D04 Precasting Segment (1-8) - Mould S2																	
0250-1650.21	Bridge D1 Pier D01 Precasting Segment (1-8) - Mould S2	24	05-Jan-14	29-Jan-14	Bridge D1 Pier D01 Precasting Segment (1-8) - Mould S2																	
03 - PRELIMINARY WORKS																						
03.3 - Interface Works																						
0330-1200	Agreement of HGHK Interim Temp Carpark	28	20-Jun-13 A	23-Jan-14	Agreement of HGHK Interim Temp Carpark																	
05 - SECTION 2 & 2A OF THE WORKS																						
05.1 - Cut & Cover Tunnel Ch 4855-4932 (APS Footprint)																						
05.1.1 - D-Wall Construction																						
0511-1091	Install Observation Well - EVB Area (Rem 8 nos.)	0	20-Nov-13 A	14-Dec-13 A	Install Observation Well - EVB Area (Rem 8 nos.)																	
0511-1100	Pump Test Ch 4855-4932	12	30-Dec-13*	13-Jan-14	Pump Test Ch 4855-4932																	
05.1.2 - ELS																						
0512-1101	Excav Zone 1 EVB Area 1st Layer + Strut	6	04-Nov-13 A	27-Dec-13	Excav Zone 1 EVB Area 1st Layer + Strut																	
0512-1102	Excav Zone 2 EVB Area 2nd Layer + Strut (4600m3)	18	31-Dec-13	21-Jan-14	Excav Zone 2 EVB Area 2nd Layer + Strut (4600m3)																	
0512-1103	Excav Zone 3 EVB Area 3rd Layer + Strut (4600m3)	24	22-Jan-14	21-Feb-14	Excav Zone 3 EVB Area 3rd Layer + S																	
0512-1120	Excav Zone 4 EVB Area 1st Layer + Strut + Dem. Bulk Head Wall	8	14-Nov-13 A	30-Dec-13	Excav Zone 4 EVB Area 1st Layer + Strut + Dem. Bulk Head Wall																	
0512-1130	Excav Zone 5 EVB Area 1st Layer + Strut + Dem. Bulk Head Wall	20	13-Jan-14	07-Feb-14	Excav Zone 5 EVB Area 1st Layer + Strut + Dem. Bulk H																	
0512-1140	Excav Zone 6 EVB Area 1st Layer + Strut + Dem. Bulk Head Wall	30	08-Feb-14	14-Mar-14	Excav 2																	
0512-1150	Excav Zone 7 EVB Area 1st Layer + Strut + Dem. Bulk Head Wall	30	25-Feb-14	31-Mar-14																		
0512-1160	Excav Zone 8 EVB Area 1st Layer + Strut + Dem. Bulk Head Wall	30	18-Mar-14	24-Apr-14																		
05.2 - Cut & Cover Tunnel Ch 4932-5149																						
05.2.1 - D-Wall Construction																						
0521-2165	Install Dewatering Well - Ch 4932-5149 (10 nos.)	0	20-Nov-13 A	10-Dec-13 A	Install Dewatering Well - Ch 4932-5149 (10 nos.)																	
0521-2166	Install Observation Well - Ch 4932-5149 (6 nos.)	0	20-Nov-13 A	10-Dec-13 A	Install Observation Well - Ch 4932-5149 (6 nos.)																	
0521-2167	Install Recharging Well - Ch 4932-5149 (2 nos.)	0	20-Nov-13 A	10-Dec-13 A	Install Recharging Well - Ch 4932-5149 (2 nos.)																	
0521-2170	Pump Test Ch 4932-5149	6	30-Dec-13	06-Jan-14	Pump Test Ch 4932-5149																	
05.2.3 - ELS																						

- Remaining Level of Effort
- Actual Level of Effort
- Actual Work
- Remaining Work
- Critical Remaining Work
- ◆ Milestone

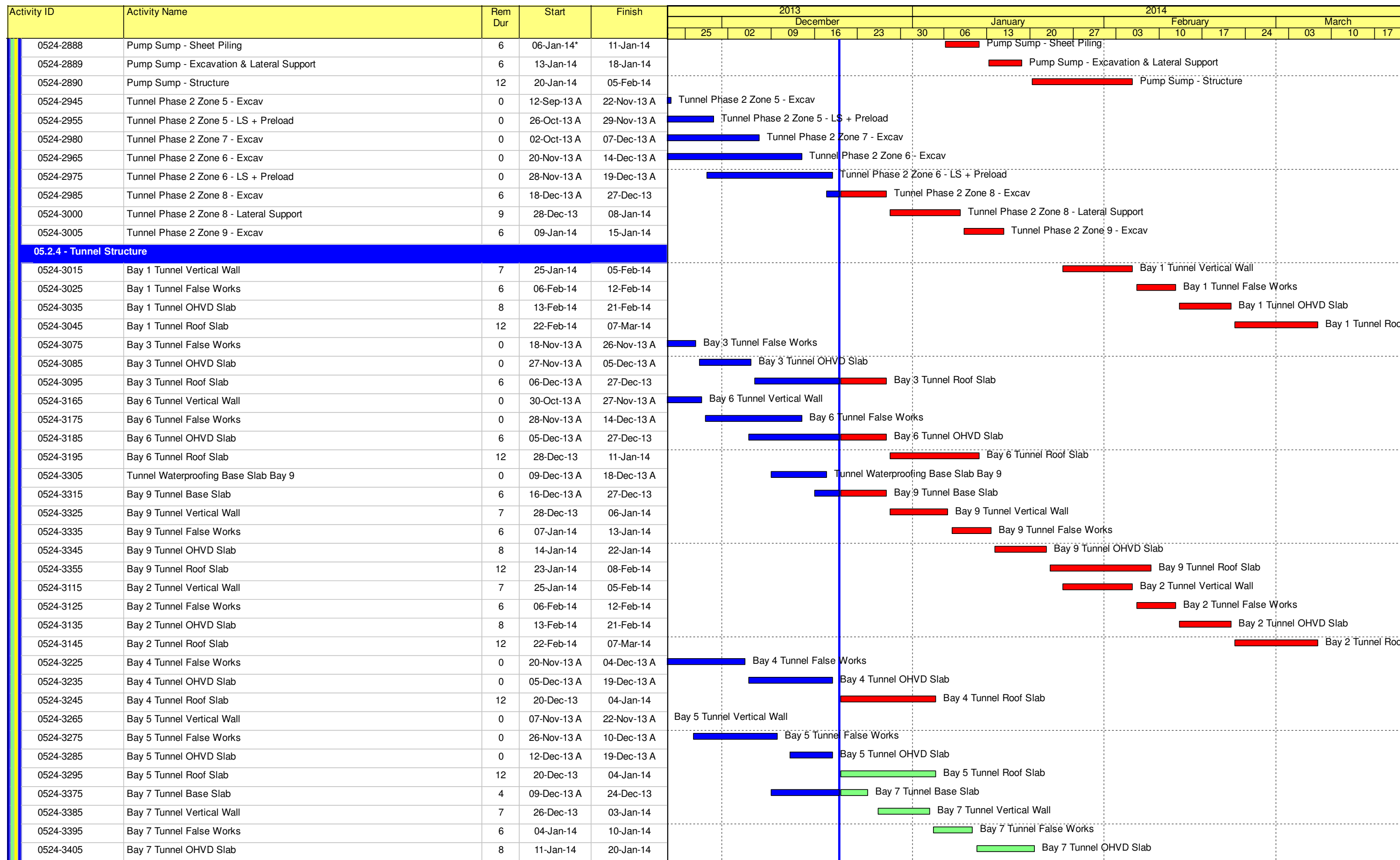
Contract HY/2009/19

Three Month Rolling Programme (20 Dec 2013 to 19 Mar 2013)

3MRP

3MRP - Dec 2013 to Mar 2014

Page 2 of 8



- Remaining Level of Effort
- Actual Level of Effort
- Actual Work
- Remaining Work
- Critical Remaining Work
- ◆ Milestone

Contract HY/2009/19







Three Month Rolling Programme (20 Dec 2013 to 19 Mar 2013)

3MRP

3MRP - Dec 2013 to Mar 2014

Page 3 of 8

Activity ID	Activity Name	Rem Dur	Start	Finish	2013												2014																																			
					December						January						February						March																													
					25	02	09	16	23	30	06	13	20	27	03	10	17	24	03	10	17																															
0620-2640	1500mm Drainage MH 1-42 to 1-43 - Pipe Laying	5	21-Jan-14	25-Jan-14																																																
0620-2650	1500mm Drainage Construct MH 1-42	12	27-Jan-14	12-Feb-14																																																
0620-2660	1500mm Drainage MH 1-42 to 1-43 - Backfill + Extract Sheet Pile	9	13-Feb-14	22-Feb-14																																																
06.3 - Admin Building																																																				
0630-3100	Predrill for Adm Building (27 no) (3 set)	18	31-Oct-13 A	11-Jan-14																																																
0630-3105	Admin Bldg Pile G.I. Report / Founding Level	18	02-Jan-14	22-Jan-14																																																
0630-3110	Pre-bored H-pile for Adm bldg (55 no) (3 set)	130	23-Jan-14	03-Jul-14																																																
10 - SECTION X OF THE WORKS																																																				
10.1 - E/B Bridges (Bridge D, E and F)																																																				
10.1.1 - Marine Pier Construction																																																				
Pier F03 to F15																																																				
1011-2291	Bearing intallation Pier F7	0	29-Oct-13 A	06-Dec-13 A																																																
1011-2320	F8 Crosshead Construction	0	21-Oct-13 A	23-Nov-13 A																																																
1011-2345	Bearing intallation Pier F8	0	28-Nov-13 A	14-Dec-13 A																																																
1011-2390	F9 Pier/Column Construction	0	28-Oct-13 A	27-Nov-13 A																																																
1011-2400	F9 Crosshead Construction	4	02-Dec-13 A	24-Dec-13																																																
1011-2405	F9 Bearing Installation	12	26-Dec-13	09-Jan-14																																																
1011-2420	F10 Pier/Column Construction	0	28-Nov-13 A	17-Dec-13 A																																																
1011-2430	F10 Crosshead Construction	18	20-Dec-13	11-Jan-14																																																
1011-2433	F10 Bearing Installation	12	13-Jan-14	25-Jan-14																																																
1011-3135	F11 Pile Cap Construction	0	04-Nov-13 A	03-Dec-13 A																																																
1011-2360	F11 Pier/Column Construction	15	20-Dec-13	08-Jan-14																																																
1011-2370	F11 Crosshead Construction	18	09-Jan-14	29-Jan-14																																																
1011-2375	F11 Bearing Installation	12	30-Jan-14	15-Feb-14																																																
1011-2440	F12 Pile Cap Shutter Cofferdam	0	21-Oct-13 A	23-Nov-13 A																																																
1011-3145	F12 Pile Cap Construction	2	25-Nov-13 A	21-Dec-13																																																
1011-2450	F12 Pier/Column Construction	15	02-Jan-14	18-Jan-14																																																
1011-2460	F12 Crosshead Construction	18	20-Jan-14	12-Feb-14																																																
1011-2465	F12 Bearing Installation	12	13-Feb-14	26-Feb-14																																																
1011-2470	F13 Pile Cap Shutter Cofferdam	0	04-Nov-13 A	05-Dec-13 A																																																
1011-3155	F13 Pile Cap Construction	6	09-Dec-13 A	27-Dec-13																																																
1011-2480	F13 Pier/Column Construction	15	13-Jan-14	29-Jan-14																																																
1011-2490	F13 Crosshead Construction	18	30-Jan-14	22-Feb-14																																																
1011-2495	F13 Bearing Installation	12	24-Feb-14	08-Mar-14																																																
1011-2500	F14 Pile Cap Shutter Cofferdam	0	11-Nov-13 A	14-Dec-13 A																																																
1011-3165	F14 Pile Cap Construction	18	17-Dec-13 A	11-Jan-14																																																
1011-2510	F14 Pier/Column Construction	12	23-Jan-14	08-Feb-14																																																
1011-2520	F14 Crosshead Construction	18	10-Feb-14	01-Mar-14																																																
1011-2525	F14 Bearing Installation	12	03-Mar-14	15-Mar-14																																																
1011-2974	Remove Temporary Platform Between F5 and F6	7	20-Dec-13	28-Dec-13																																																
1011-2975	F3 Extract Temp Pile	15	30-Dec-13	16-Jan-14																																																
1011-2985	F4 Extract Temp Pile	15	17-Jan-14	06-Feb-14																																																
1011-3105	F5 Extract Temp Pile	12	07-Feb-14	20-Feb-14																																																
1011-2265	F6 Extract Temp Pile	12	21-Feb-14	06-Mar-14																																																

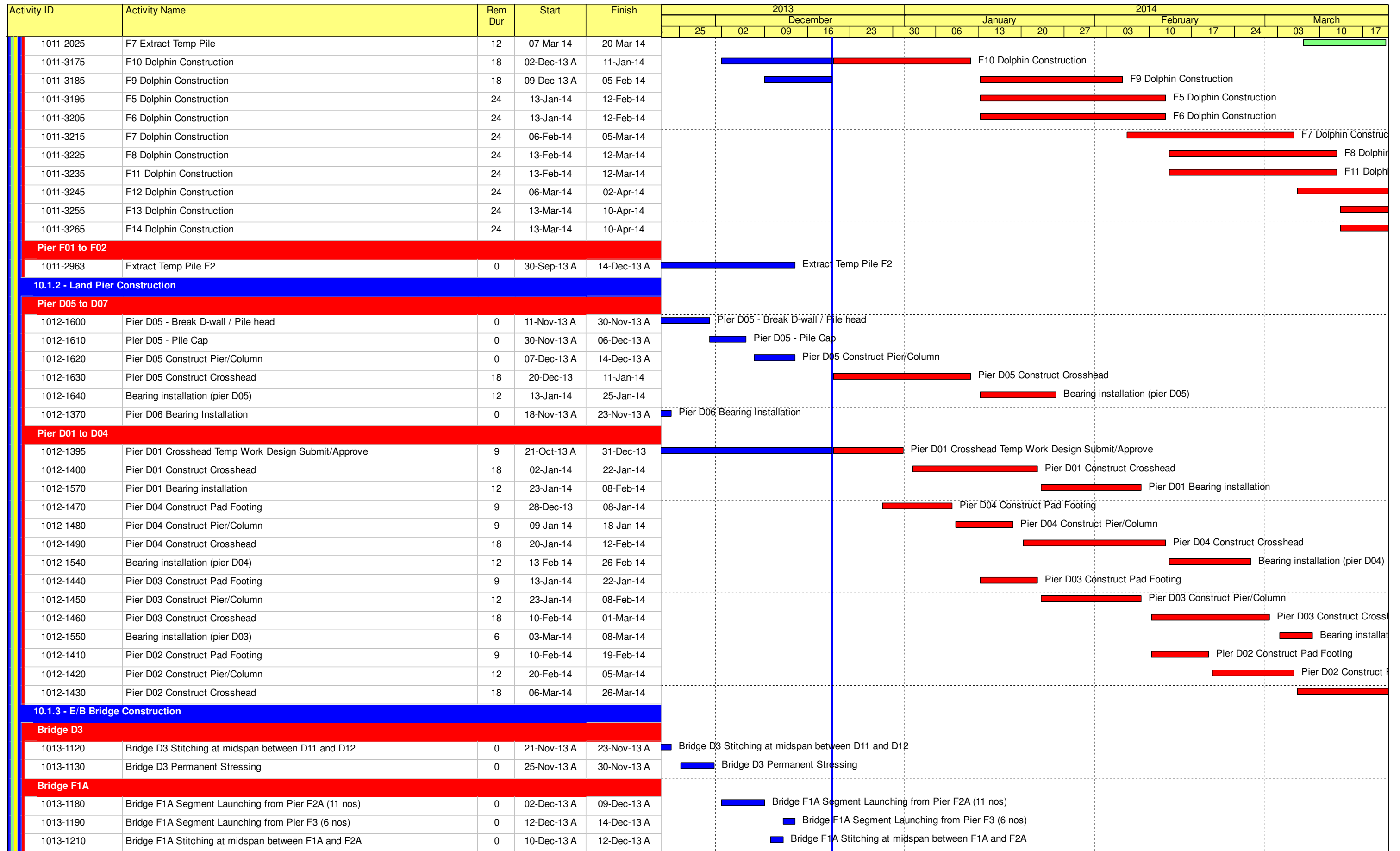
-  Remaining Level of Effort
-  Actual Level of Effort
-  Actual Work
-  Remaining Work
-  Critical Remaining Work
-  Milestone

Contract HY/2009/19

Three Month Rolling Programme (20 Dec 2013 to 19 Mar 2013)

3MRP

3MRP - Dec 2013 to Mar 2014



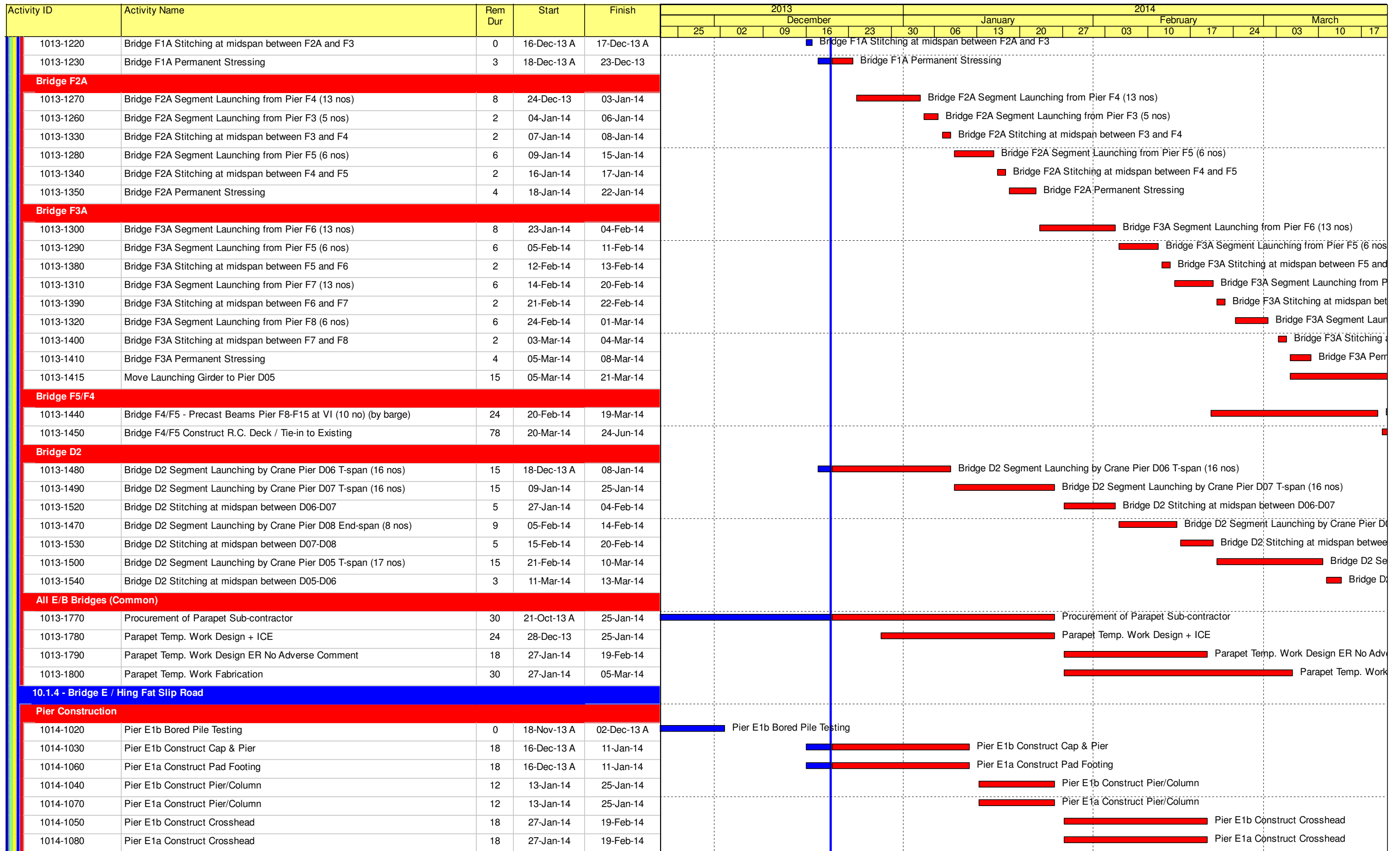
- Remaining Level of Effort
- Actual Level of Effort
- Actual Work
- Remaining Work
- Critical Remaining Work
- Milestone

Contract HY/2009/19

Three Month Rolling Programme (20 Dec 2013 to 19 Mar 2013)

3MRP

3MRP - Dec 2013 to Mar 2014



- Remaining Level of Effort
- Actual Level of Effort
- Actual Work
- Remaining Work
- Critical Remaining Work
- ◆ Milestone

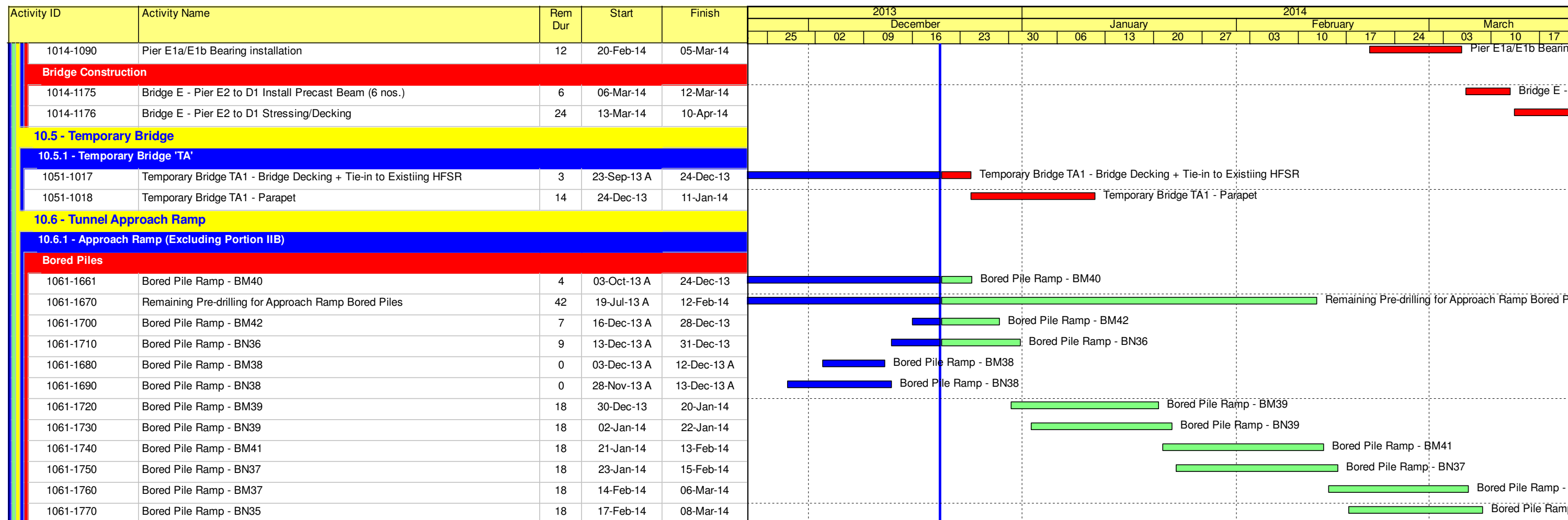
Contract HY/2009/19

Three Month Rolling Programme (20 Dec 2013 to 19 Mar 2013)

3MRP

3MRP - Dec 2013 to Mar 2014

Page 7 of 8



- Remaining Level of Effort
- Actual Level of Effort
- Actual Work
- Remaining Work
- Critical Remaining Work
- Milestone

Contract HY/2009/19

Three Month Rolling Programme (20 Dec 2013 to 19 Mar 2013)

3MRP

3MRP - Dec 2013 to Mar 2014

Activity ID	Activity Name	Original Duration	Start	Finish	2014					
					Jan	Feb	Mar	Apr	May	
HY/2010/08: CWB-SR8 Three Months Rolling Programme_updated up to 20140120										
Works in TS3										
TS3 East & West Reclamation Works										
TS3E - Reclamation (Advance Works)										
TS3E.MW.1025	TS3E North - Dredging Works (Type3 + Type 1 & 2)	59	04-Nov-13 A	17-Jan-14 A	TS3E North - Dredging Works (Type3 + Type 1 & 2)					
TS3E.MW.1030	TS3E North - Rockfill + Levelling Works	13	20-Jan-14 A	06-Feb-14	TS3E North - Rockfill + Levelling Works					
TS3E.MW.1050	C15 - Relocate Vessels	9	07-Feb-14	17-Feb-14	C15 - Relocate Vessels					
TS3E.MW.1060	C15 - Dredging at Temporary Mooring Area	18	18-Feb-14	10-Mar-14	C15 - Dredging at Temporary Mooring Area					
TS3E.MW.1070	C15 - Relocate Vessels	24	11-Mar-14	08-Apr-14	C15 - Relocate Vessels					
TS3E.MW.1080	TS3E South - Dredging Works (Type 3)	19	09-Apr-14	05-May-14	TS3E South - Dredging Works (Type 3)					
TS3E.MW.1085	TS3E South - Dredging Works (Type 1 & 2)	28	07-May-14	09-Jun-14	TS3E South - Dredging Works (Type 1 & 2)					
Works in SR8 (Open Cut Method)										
SR8 - Cofferdam & Cut & Cover Tunnel Works										
SR8 East Bound - (Seaside to Victoria Road / IEC Central Divider)										
TTA Stage 0 - East Bound										
Stage 0B - East Bound (Seaside) (Ref. DRG. No. CDD/SR8/081)										
SR8.EB.0240	Demolish Island / Construct & Relocate New Bus Stop (West of Footbridge)	24	16-Nov-13 A	28-Jan-14	Demolish Island / Construct & Relocate New Bus Stop (West of Footbridge)					
Stage 1A - East Bound (Seaside) (Ref. DRG. No.CDD/SR8/082)										
SR8.EB.1030	Carry out Stage 1A Sheet Pile Work	15	24-Dec-13 A	09-Jan-14 A	Carry out Stage 1A Sheet Pile Work					
SR8.EB.1040	Carry out Stage 1A Pipe Piling Work	28	09-Jan-14 A	05-Mar-14	Carry out Stage 1A Pipe Piling Work					
SR8.EB.1060	Trim down the Sheet Pile and Pipe Pile and construct the Gas Main Trough	12	20-Feb-14	05-Mar-14	Trim down the Sheet Pile and Pipe Pile and construct the Gas Main Trough					
SR8.EB.1050	Carry out Stage 1A TAM Grout	10	06-Mar-14	17-Mar-14	Carry out Stage 1A TAM Grout					
SR8.EB.1070	Divert the Water Main to Seaside	18	06-Mar-14	26-Mar-14	Divert the Water Main to Seaside					
SR8.EB.1090	Trim down the Sheet Pile/Pipe Pile and Divert HEC Cable (11kv) to completed Pipe pile	18	06-Mar-14	26-Mar-14	Trim down the Sheet Pile/Pipe Pile and Divert HEC Cable (11kv) to completed Pipe pile					
SR8.EB.1100	Pre- Laying of One Gas Main Pipe to Gas Trough for diversion at Stage 2	18	06-Mar-14	26-Mar-14	Pre- Laying of One Gas Main Pipe to Gas Trough for diversion at Stage 2					
SR8.EB.1080	Divert Gas Main from Foot Path to Gas Main Trough	18	13-Mar-14	02-Apr-14	Divert Gas Main from Foot Path to Gas Main Trough					
SR8.EB.1110	Shift wiring and Relocation of Lamp Post	12	20-Mar-14	02-Apr-14	Shift wiring and Relocation of Lamp Post					
SR8.EB.1120	Shift Wiring and Relocation of Traffic Control Box	12	20-Mar-14	02-Apr-14	Shift Wiring and Relocation of Traffic Control Box					
SR8.EB.1130	Relocation of Hydrant	12	20-Mar-14	02-Apr-14	Relocation of Hydrant					
Stage 1B - East Bound (Seaside) (Ref. DRG. No.CDD/SR8/082)										
SR8.EB.1210	Carry-out preboring for Stage 1B Sheet Pile	11	31-Mar-14	12-Apr-14	Carry-out preboring for Stage 1B Sheet Pile					
SR8.EB.1220	Carry-out Stage 1B Sheet Piling works	8	11-Apr-14	23-Apr-14	Carry-out Stage 1B Sheet Piling works					
SR8.EB.1230	Carry-out Stage 1B Pipe Piling works	24	24-Apr-14	23-May-14	Carry-out Stage 1B Pipe Piling works					
SR8.EB.1250	Install King Post for Traffic Deck (3 nos.)	16	24-May-14	12-Jun-14	Install King Post for Traffic Deck (3 nos.)					

- █ Actual Work
- █ Remaining Work
- █ Critical Remaining Work
- ◆ Milestone

Date	Revision	Checked	Approved
20-Jan-14	Updated to 20th Jan 2014	DML/WC	

Activity ID	Activity Name	Original Duration	Start	Finish	2014					
					Jan	Feb	Mar	Apr	May	
SR8.EB.1255	Carry-out Stage 1B TAM Grout + Jet Grouting (12nos)	22	24-May-14	19-Jun-14						
SR8 West Bound - Ch. 369.000 to 495.000 (Victoria Road / IEC Central Divider)										
TTA Stage 0 (West Bound)										
Stage 1A - West Bound (Inside VP) (Ref. DRG. No.CDD/SR8/085)										
SR8.WB.1050	Carry out stage 1A1 Pipe Piling Work (Row A)	73	12-Nov-13 A	10-Mar-14	Carry out stage 1A1 Pipe Piling Work (Row A)					
SR8.WB.1035	Install Sheet Pile for Road Diversion (Row C)	28	29-Nov-13 A	24-Feb-14	Install Sheet Pile for Road Diversion (Row C)					
SR8.WB.1080	Carry out Stage 1A2 Pipe Piling Work (Row B)	63	19-Dec-13 A	26-Feb-14	Carry out Stage 1A2 Pipe Piling Work (Row B)					
SR8.WB.1115	Trench Excavation & Diversion of Existing 11kv Cable	64	20-Dec-13 A	12-Mar-14	Trench Excavation & Diversion of Existing 11kv Cable					
SR8.WB.1100	Install King Post for Traffic Deck	18	25-Feb-14	17-Mar-14	Install King Post for Traffic Deck					
SR8.WB.1110	Relocate Fire Hyrdant and divert the water main	12	04-Mar-14	17-Mar-14	Relocate Fire Hyrdant and divert the water main					
SR8.WB.1112	Carry out Stage 1A2 TAM Grout	26	11-Mar-14	10-Apr-14	Carry out Stage 1A2 TAM Grout					
Stage 1B - West Bound (Inside VP) (Ref. DRG. No.CDD/SR8/085)										
SR8.WB.1220	Carry out Stage 1B Sheet Pile Work	5	11-Apr-14	16-Apr-14	Carry out Stage 1B Sheet Pile Work					
SR8.WB.1230	Carry out Stage 1B Pipe Piling Work	12	17-Apr-14	05-May-14	Carry out Stage 1B Pipe Piling Work					
SR8.WB.1240	Carry out Stage 1B TAM Grout	6	07-May-14	13-May-14	Carry out Stage 1B TAM Grout					
SR8.WB.1250	Construction of Traffic Deck and Temporary Road	30	08-May-14	12-Jun-14	Construction of Traffic Deck and Temporary Road					
SR8 Ch.369.000 to Ch.317.500 - (Inside Victoria Park to Tunnel Portal)										
Stage 4 - SR8 Ch.369.000 to Ch317.500 (Tunnel Portal) (Ref. DRG. No.CDD/SR8/087)										
SR8.VP.4010	Carry Out Stage 4 Sheet Pile Works	90	19-Dec-13 A	31-Jul-14	Carry Out Stage 4 Sheet Pile Works					
Tsing Fung St - RW & Subway Extension & Toe Wall at Hing Fat St										
Ret. Wall & TF Subway Extension (Portion V)										
Retaining Wall at Tsing Fung Street (Portion V)										
VP_1215	Construct Temporary Pedestrian Walkway	60	20-Jan-14*	02-Apr-14	Construct Temporary Pedestrian Walkway					
VP_1205	Implement TTA	2	03-Apr-14	04-Apr-14	Implement TTA					
VP_1225	Pre-boring for Sheet Pile	12	07-Apr-14	23-Apr-14	Pre-boring for Sheet Pile					
VP_1235	TFS New Ret. Wall -sheet pile (400 m2)	12	24-Apr-14	09-May-14	TFS New Ret. Wall -sheet pile (400 m2)					
VP_1240	TFS New Ret. Wall - excavation	42	10-May-14	28-Jun-14	TFS New Ret. Wall - excavation					
Works in Victoria Park										
Re-Provisioning Works										
Children's Playground										
Procurement										
VP_0125	Material/Equipment- delivery	48	15-Nov-13 A	13-Jan-14 A	Material/Equipment- delivery					
Construction Works										
VP_1080.03	CP - Catchpits + U-Channel Drainage System	12	22-Nov-13 A	18-Jan-14 A	CP - Catchpits + U-Channel Drainage System					
VP_1200	CP - Install Play Equipment	18	29-Nov-13 A	10-Jan-14 A	CP - Install Play Equipment					

- █ Actual Work
- █ Remaining Work
- █ Critical Remaining Work
- ◆ Milestone

Date	Revision	Checked	Approved
20-Jan-14	Updated to 20th Jan 2014	DML/WC	

Activity ID	Activity Name	Original Duration	Start	Finish	2014					
					Jan	Feb	Mar	Apr	May	
VP_1140	CP - Lighting System	18	20-Jan-14	12-Feb-14		█				
VP_1230	CP - Install Safety Matting	12	27-Jan-14	12-Feb-14		█				
VP_1160	CP - Completion of KD4 - Works in Section1B	0		12-Feb-14			◆			
Bowling Green Office										
BGO - Construction Works										
VP_1100.02	BGO - site clearance	24	02-Dec-13 A	19-Feb-14		█				
VP_1150	BGO - Underground utilities & foundation works	36	12-Mar-14	26-Apr-14				█		
VP_1180.01	BGO - Base Slab	24	28-Apr-14	27-May-14					█	
VP_1180.02	BGO - Walls	36	14-May-14	25-Jun-14						█
Tree Transplanting at Portion XIV (Victoria Park Open Space)										
VP_1040	Tree Transplanting & Upkeep at Portion XIV	347	16-Oct-13 A	13-Jan-15						
Mooring Components Upkeep (CBTS and ATS)										
MAR_2000	Mooring Upkeep at Portion XIX(19) & XX(20) - ATS (if instructed by Engineer)	1399	21-Mar-13 A	17-Feb-17						
Works for Public Works Regional Laboratory (North Lantau)										
Maintenance and Upkeep of New PWRL (Portion XVII)										
PWRL_1050	Maintenance/ Upkeep of New PWRL	1301	19-Jul-13 A	16-Dec-17						

- █ Actual Work
- █ Remaining Work
- █ Critical Remaining Work
- ◆ Milestone

Date	Revision	Checked	Approved
20-Jan-14	Updated to 20th Jan 2014	DML/WC	